

Ducted Systems Technical Services: Service Tips Letter

Letter: ST-003-22 Revised

Date: March 10, 2022 Effective: March 10, 2022 Expires: Jan 1, 2023

To: S1 HVAC Branch and Distributor Principal, Sales Manager, Service Manager, Parts Manager, Warranty Manager, Training Manager, Delegated Administrator.
Ducted Systems Technical Services, DS Parts/S1, ES Americas, ADTI Channel, Account Representatives, Marketing, Sales, Warranty teams.

Subject: **P266 Factory Installed Low Ambient Controller Parameter Change**

Product/s: Pro (Series 10) 3-12.5 Ton Packaged Equipment

Summary: This letter addresses some changes to the P-266 low ambient control module programming to assist with condenser fan sound concerns.

Revision: Updated New Set Points for P266 Chart

Commercial Technical Services has received field-generated reports regarding the factory-installed low ambient kits for the Pro equipment. Reporting has varied from concerns of abnormal condenser fan sounds to multiple condenser fan motor failures. Due to regulatory changes in 2023 for HVAC products Johnson Controls has opted to no longer utilize the P-266 for production and is currently undergoing testing for a new factory-installed low ambient controller and kit.

To assist with field concerns Johnson Controls performed testing and found that some changes in the programming can be performed to assist with these events. Below is a chart showing the change that can be performed in the event any equipment exhibits concerns of unit operation. In the event, your customer is still having any sound occurrence or motor operation concerns during the lower RPM operation of the condenser fan motors the wiring below can be performed to match what the newer equipment will have implemented with the new control.

Note: Before making any wiring changes, power must be shut off for the system. Once off, it must be confirmed that voltage is not present at the device with an approved multimeter while using proper PPE.

We apologize for any inconvenience this may have caused. If you have questions, please call us at 877-874-7378 and follow the phone-cue prompts for your product or have your distributor contact us at cg-upgtechsupport@jci.com.

Ian Boger

Product Technical Support ENG II

Commercial Technical Services

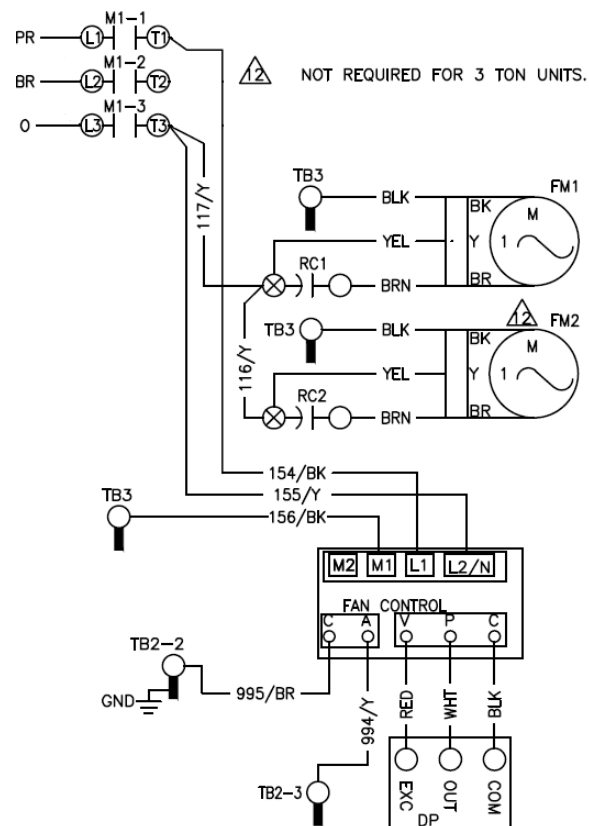
5005 York Drive Norman OK 73069

Programing Changes:

New set points for P266				
Flashes	Set Points	Value	Switch on	Remarks
2	Start Voltage	50	32,16,2	Fan will stay off until min start pressure, Min RPM 420
3	Start Pressure	220	64,8,1	Start pressure 220 PSI
4	End Pressure	260	64,16,4,2	End pressure 260 PSI

Alternate High Voltage wiring:

Note: Before making any wiring changes, power must be shut off for the system. Once off, it must be confirmed that voltage is not present at the device with an approved multimeter while using proper PPE.



Note: Wiring numbers and colors may differ between nomenclature types, wiring should be as follows:

- T1 Wire → P266 L1
- T3 Wire → P266 L2/N
- FM 1 and 2 L1 wire → P266 M1